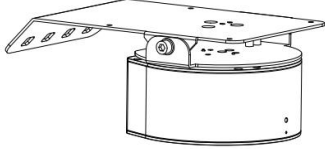






# PTH-01 Firmware (FW) Update Manual

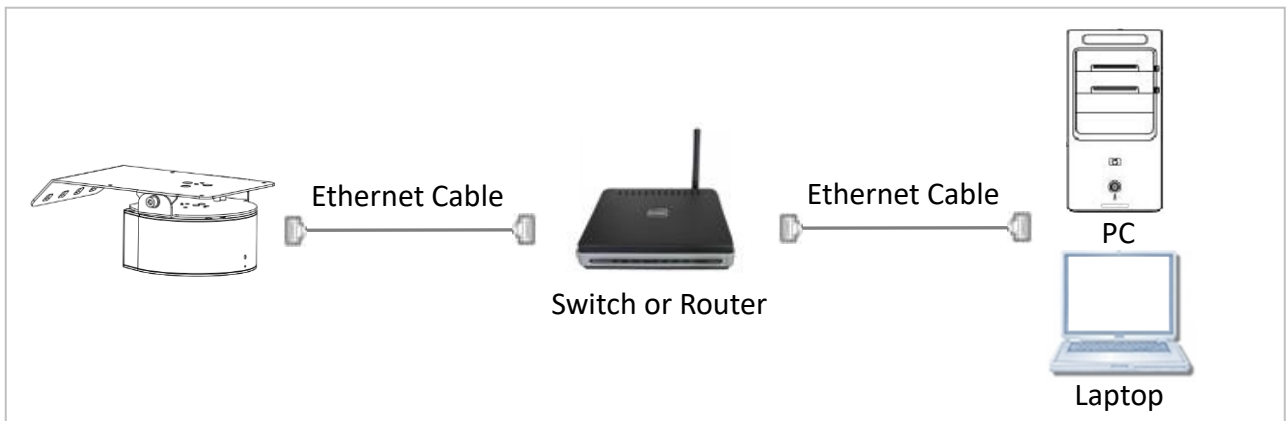
## 1 Device and Tool Preparation

1.1 Before performing the FW upgrade, please prepare the following items:

PTH-01	PC or Laptop
	 or 
Power adapter and power cord	Ethernet cable
	

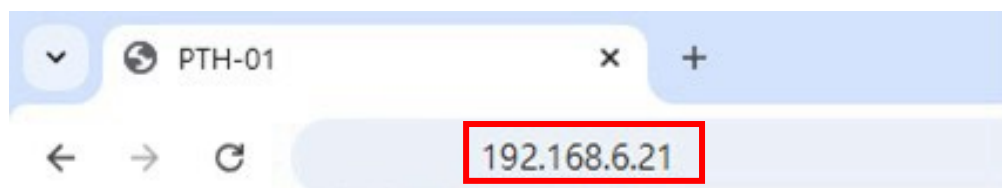
## 2 Connections

2.1 Connecting through a network switch or router.

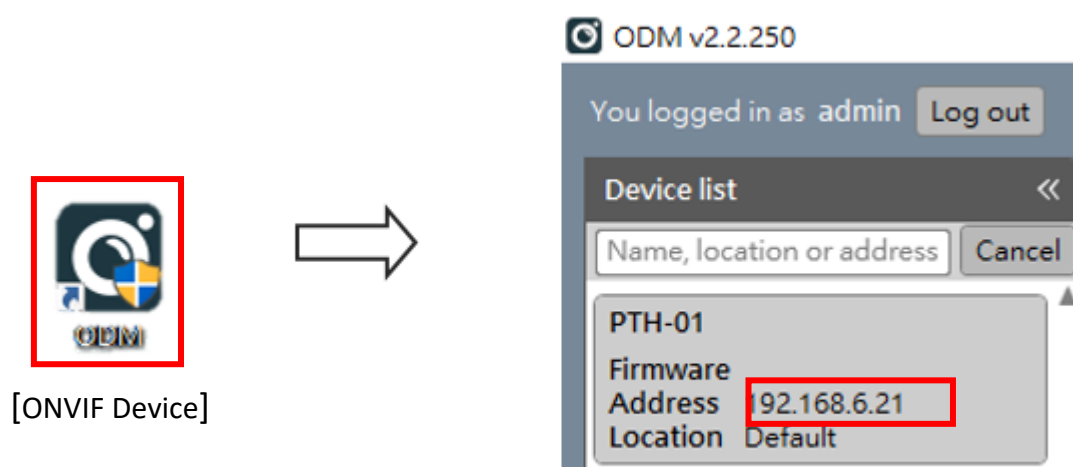


### 3 FW Download

3.1 Open a web browser and enter the IP address of the PTH-01 in the address bar.



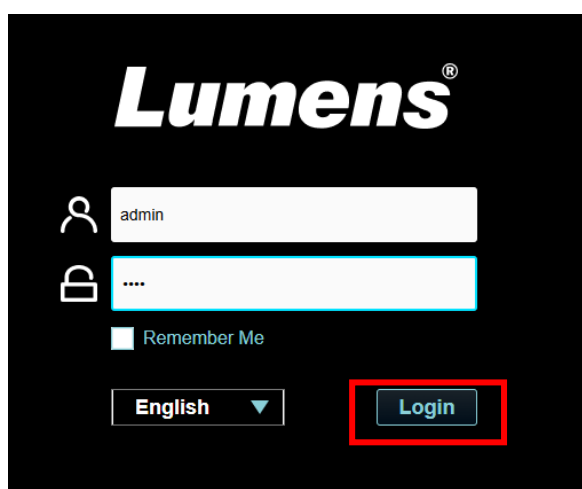
3.2 If you do not know the current IP address, use the ONVIF Device Manager software. This tool automatically detects ONVIF-compatible devices on the network and displays their assigned IP addresses.



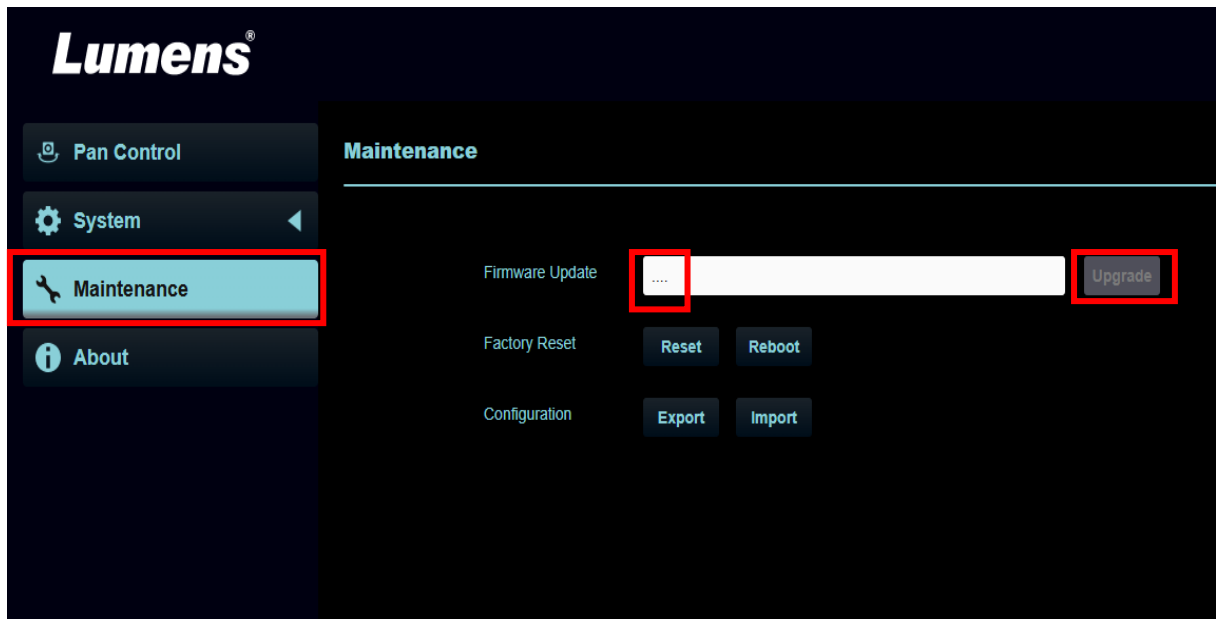
3.3 Enter the following account and default password to log in to the device webpage:

Account: admin

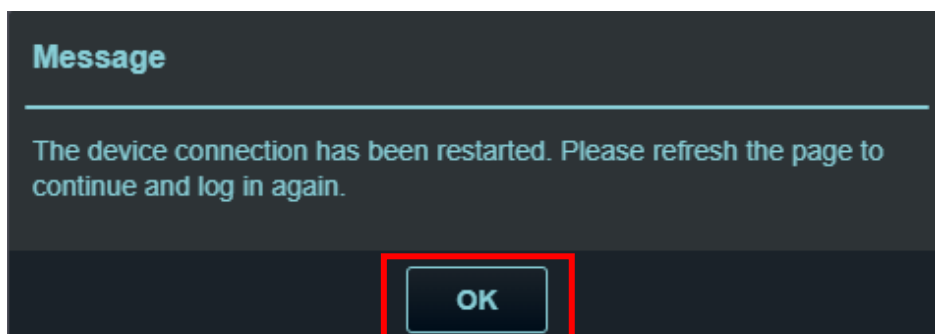
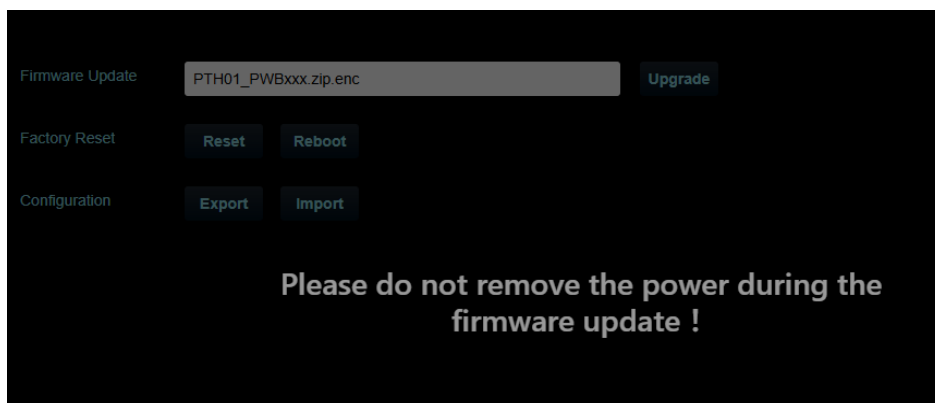
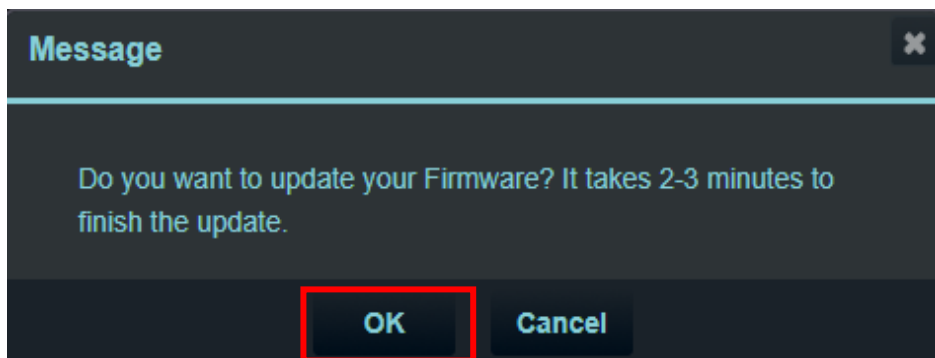
Password: 9999 (Default)



- 3.4 Navigate to [Maintenance] > [Firmware Update].  
Select the firmware file and click [Upgrade].



- 3.5 FW download process takes about 2–3 minutes.  
Do not close the browser during the update.



3.6 To confirm the upgrade, please Log in the web page again.

Navigate to [About] → [Firmware Version] to check the updated version.

